

**ONE**  
*stands above  
the rest*

**CUSHMAN &  
WAKEFIELD**



## FULL FLOOR - TROPHY SPACE



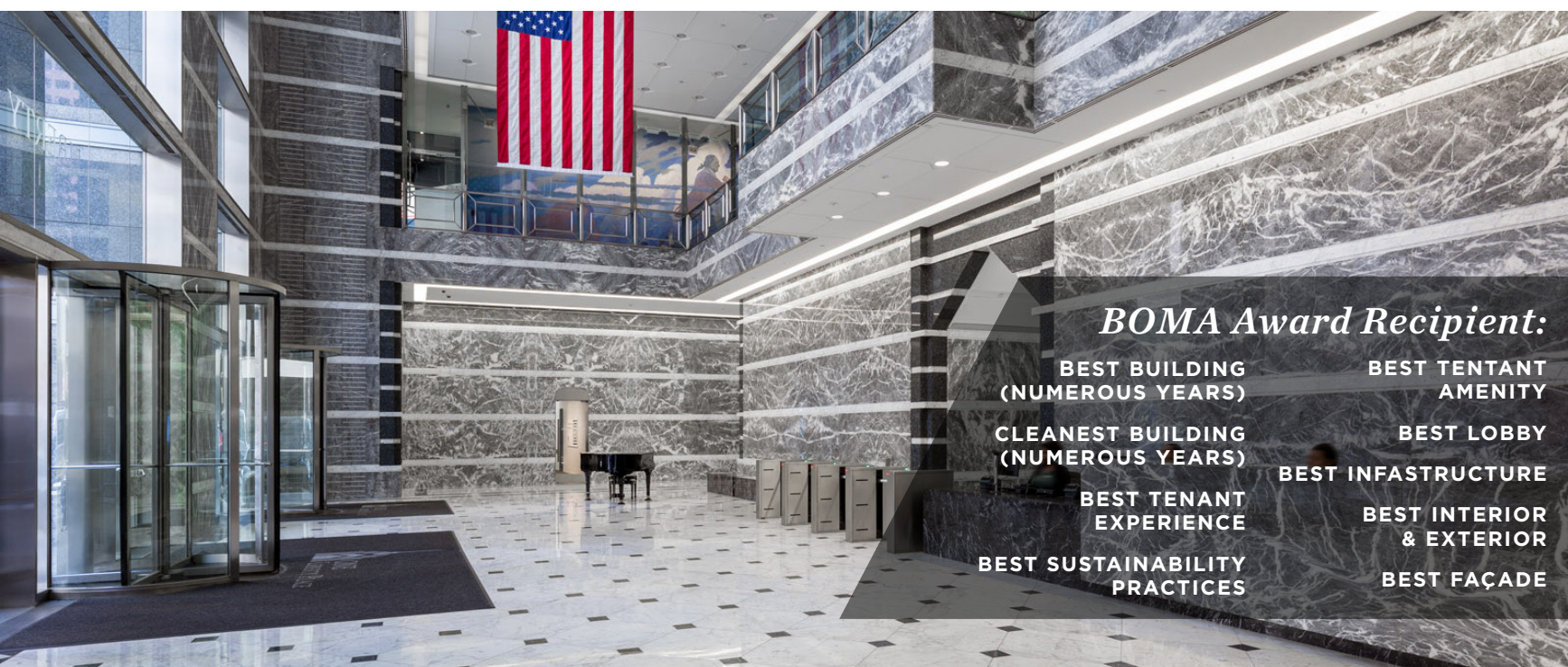
24,116 SF



**SPECTACULAR  
VIEWS!**

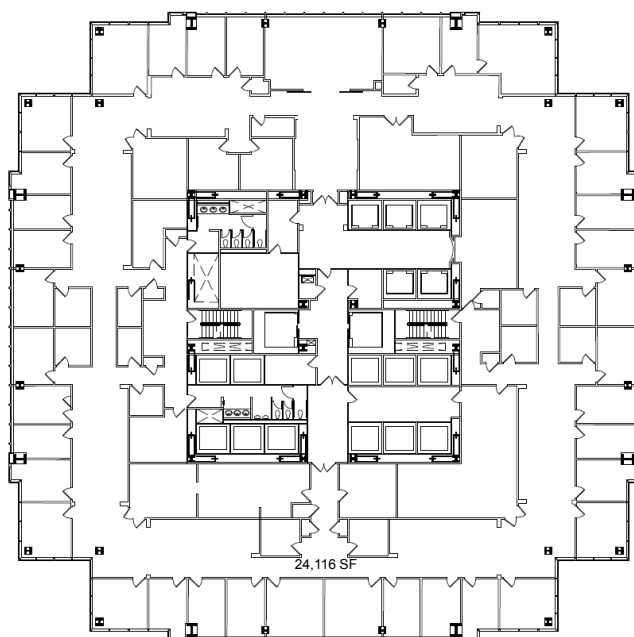


**COLUMN-  
FREE**



### ***BOMA Award Recipient:***

<b>BEST BUILDING (NUMEROUS YEARS)</b>	<b>BEST TENANT AMENITY</b>
<b>CLEANEST BUILDING (NUMEROUS YEARS)</b>	<b>BEST LOBBY</b>
<b>BEST TENANT EXPERIENCE</b>	<b>BEST INFRASTRUCTURE</b>
<b>BEST SUSTAINABILITY PRACTICES</b>	<b>BEST INTERIOR &amp; EXTERIOR</b>
	<b>BEST FAÇADE</b>



**32<sup>ND</sup> FLOOR**



**METROPOLIS**

**For more information contact:**

**William J. Hirschfeld, CCIM**  
Senior Director  
+1 215 963 4025  
bill.hirschfeld@cushwake.com

**Cushman & Wakefield of Pennsylvania, LLC**  
1650 Market Street - 33rd Floor  
Philadelphia, PA 19103  
+1 215 963 4000